

Saxofone alto 2

Eleanor Rigby

The Beatles
Adap: Angelino

$\text{♩} = 120$ **A**

6

mf — *f* — *f*

B

10

mp

15

20

C

28

f

33

mf — *f*

38

D *mf*

46

f

50

2

E

Saxofone alto 2

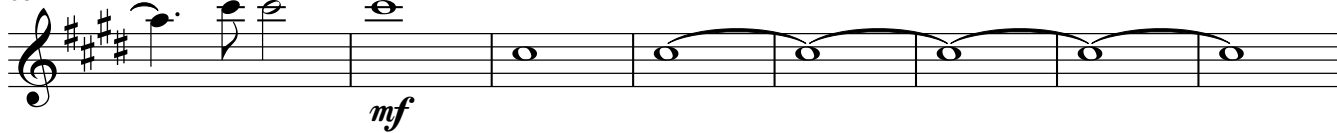
54



59



63



71

ritt.

