

Beatriz

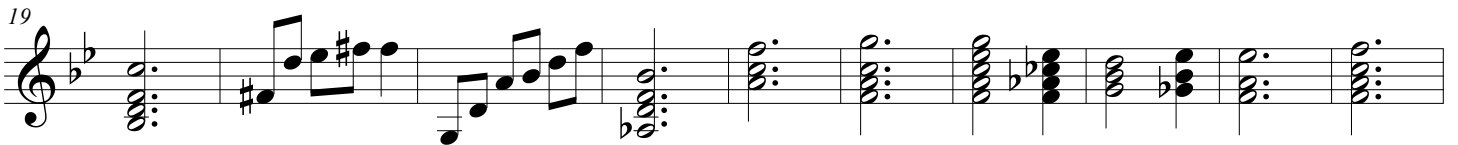
O Grande Circo Místico

Chico Buarque e Edu Lobo

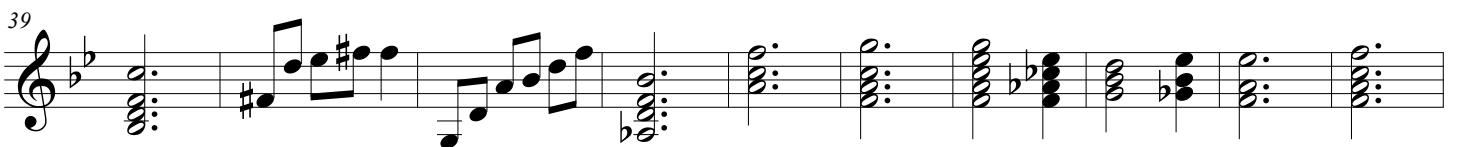
Beatriz S Pereira



A



B



C

Musical staff for section C, measures 1-53. The staff is in treble clef with a key signature of two flats (Bb and Eb) and a 2/4 time signature. The melody consists of eighth and quarter notes, ending with a final chord of Bb3, Eb3, and Gb3.

Musical staff for section C, measures 54-60. Measures 54-55 are in 2/4 time, while measures 56-60 are in 3/4 time. The staff features a mix of eighth and quarter notes, with some measures containing chords. The key signature remains two flats.

Musical staff for section C, measures 61-65. Measures 61-63 contain chords, while measures 64-65 contain eighth notes. The key signature remains two flats.

D

Musical staff for section D, measures 66-70. The staff is in treble clef with a key signature of two flats and a 2/4 time signature. The melody consists of eighth and quarter notes.

Musical staff for section D, measures 71-75. The staff is in treble clef with a key signature of two flats and a 2/4 time signature. The melody consists of eighth and quarter notes.

Musical staff for section D, measures 76-88. The staff is in treble clef with a key signature of two flats and a 2/4 time signature. The melody consists of eighth and quarter notes, with some measures containing chords.

E

Musical staff for section E, measures 89-88. The staff is in treble clef with a key signature of two flats and a 2/4 time signature. The melody consists of eighth and quarter notes, ending with a final chord.

Musical staff for section E, measures 89-94. The staff is in treble clef with a key signature of two flats and a 2/4 time signature. The melody consists of eighth and quarter notes, ending with a final chord.