

# SOBRE AS ONDAS

Contrabaixo (Over the Waves - Uber den Wellen - Sobre las Olas - Over Bolgen)

Arr. Felinto Lúcio Dantas Neto

Rita Moura Fortes

$\text{♩} = 170$

*f* Juventino Rosas

7 **A**

*p* *p*

15

2 3

23 **B**

*pp*

31

39

47

*ff*

55 **C**

*mf*

63

70

*f*

77

Musical staff 77-83 in bass clef with a key signature of three sharps (F#, C#, G#). The music consists of a sequence of eighth notes with rests. A dynamic marking of *p* is centered below the staff.

84

Musical staff 84-90 in bass clef with a key signature of three sharps. The music continues with eighth notes and rests, ending with a fermata.

91

**D**

**32**

**E**

Musical staff 91-127 in bass clef with a key signature of three sharps. It features a 32-measure rest block, followed by a key signature change to two sharps (F#, C#) and a series of eighth notes with rests.

128

Musical staff 128-135 in bass clef with a key signature of two sharps. The music consists of eighth notes with rests. A dynamic marking of *pp* is at the end of the staff with a hairpin.

136

Musical staff 136-143 in bass clef with a key signature of two sharps. The music consists of eighth notes with rests. A dynamic marking of *ff* is centered below the staff.

144

Musical staff 144-151 in bass clef with a key signature of two sharps. The music consists of eighth notes with rests. Dynamic markings of *p* and *mf* are shown with hairpins.

152

1.

2.

**32**

Musical staff 152-188 in bass clef with a key signature of two sharps. It features a first ending (1.) and a second ending (2.) with repeat signs, followed by a 32-measure rest block.

189

Musical staff 189-195 in bass clef with a key signature of two sharps. The music consists of dotted half notes. A dynamic marking of *pp* is centered below the staff.

192



200



208



214



221



229



237



245



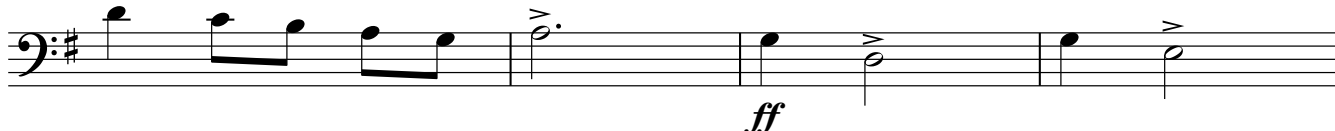
253



262



269



4

273

Musical notation for a single staff in bass clef with a key signature of one sharp (F#). The staff contains five measures of music. The first measure has a quarter note on G2 and a half note on F#2. The second measure has a quarter note on G2 and a half note on F#2. The third measure has a quarter note on G2 and a half note on F#2. The fourth measure has a quarter note on G2 and a half note on F#2. The fifth measure has a quarter note on G2 and a half note on F#2. The notation includes dynamic markings 'fz' above the notes in the third and fourth measures, and 'sfz' below the final note in the fifth measure.