

Saxofone Tenor

L'Inverno

Antonio Vivaldi. op. 8 n° 4
(ca. 1675-1741)

Arr.: Angelino/Miguel

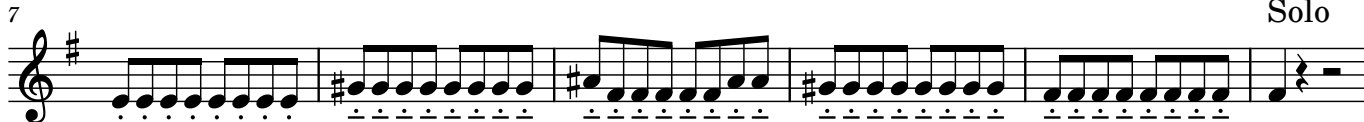
A

Allegro non molto (ca. ♩ = 65)



B

Solo



13

Tutti



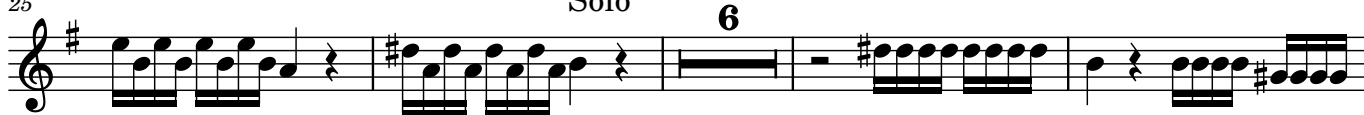
C



25

Solo

6



35



40

2



D

9

Tutti



60

