

Cello

1 - Bicharia

Os Saltimbancos

Luiz Enriquez/Sérgio Bardotti

pizz. A

6

12 (b)

17

B

C

29

D

35

40

46 (b)

©

2 - O Jumento

Saltimbancos

Luiz Enriquez

6 A

12

19 B

28

38 C

46

54 D

62

71 E

79

86  Musical staff with bass clef, key signature of two sharps (F# and C#), and a 4-measure rest at the end.

F

 Musical staff with bass clef, key signature of two sharps, and a sequence of eighth notes.

104  Musical staff with bass clef, key signature of two sharps, and a sequence of eighth notes.

G

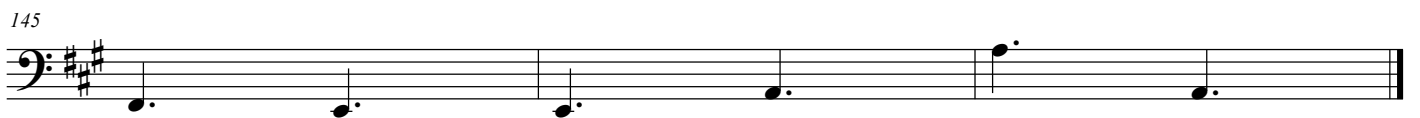
111  Musical staff with bass clef, key signature of two sharps, and a sequence of eighth notes.

120  Musical staff with bass clef, key signature of two sharps, and a sequence of eighth notes.

H

129  Musical staff with bass clef, key signature of two sharps, and a sequence of eighth notes.

137  Musical staff with bass clef, key signature of two sharps, and a sequence of eighth notes.

145  Musical staff with bass clef, key signature of two sharps, and a sequence of eighth notes.

Cello
(Cão)

3 - Um dia de Cão

Saltimbancos

Luiz Enriquez

A arco



16 pizz.



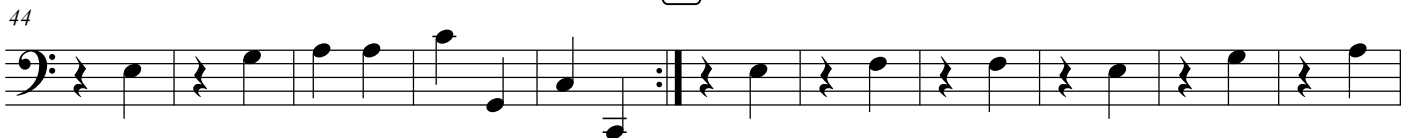
B arco



C pizz.



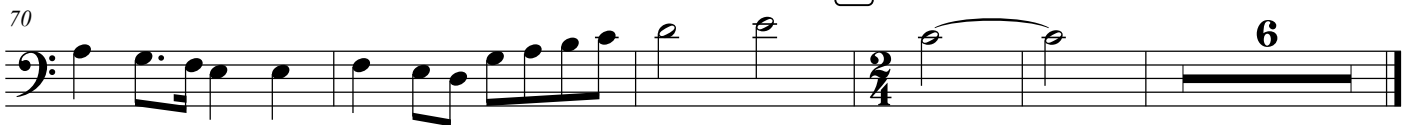
D



F Moderato (♩ = c. 108)



G Vivace



4 - A Galinha

Saltimbancos

Luiz Enriquez

4 A

6 - A Cidade Ideal

Saltimbancos

Luiz Enriquez

pizz.



6



11

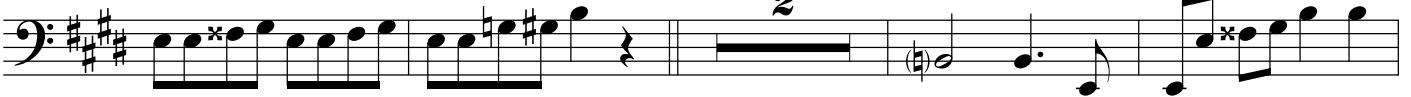


15



A

19



rit. B

25



C

arco

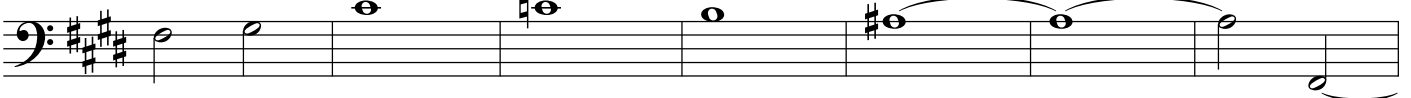


D

40



48



6 - A Cidade Ideal

pizz.

E

55

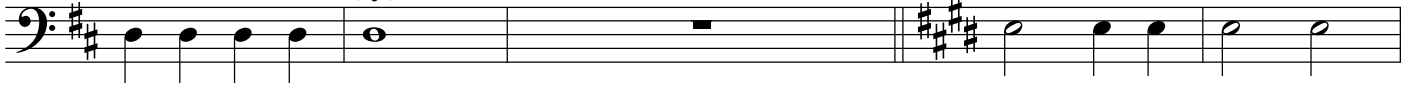
2

61



C

67



72



78



84



90



96



8 - Todos Juntos

Luiz Enriquez

4

A

9

B

15

C

20

D

25

30

E

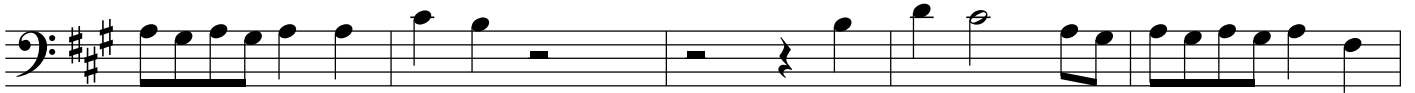
36

F

42

48

G



Cello

9 - Esconde Esconde

Saltimbancos

Luiz Enriquez

$\text{♩} = 92$

A

2

9

18

10 - A Pousada do Bom Barão

Luiz Enriquez

54

10 - A Pousada do Bom Barão

Luiz Enriquez

